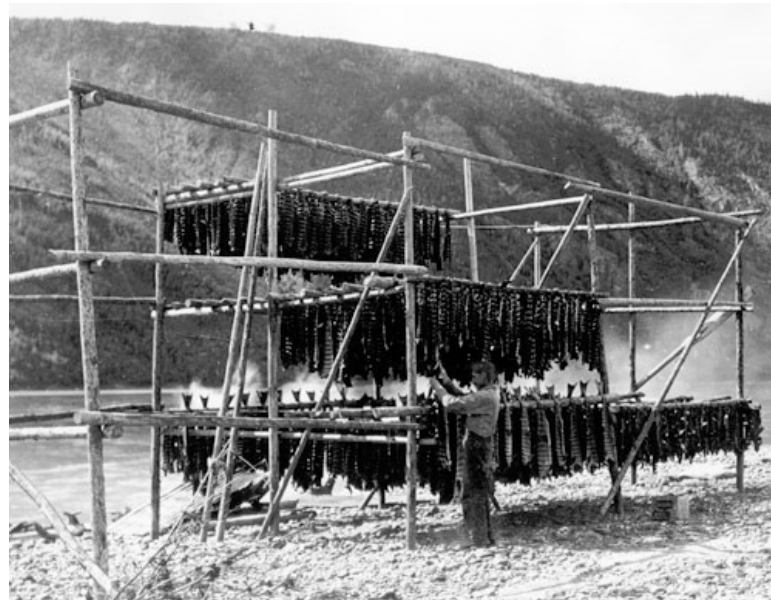




Canadian-Origin Yukon River Chum Salmon (Mainstem)



2016 Season Summary and 2017 Pre-Season Canadian Management Considerations

Presented to: Yukon River Panel
Whitehorse, Yukon April 3-5 , 2017



Yukon River Mainstem Chum Salmon 2016 Canadian Management Strategy

Preseason Outlook: 137,000 – 195,000 Canadian-origin chum salmon

First Nation Subsistence Fisheries:

- Unrestricted

Commercial/Domestic/Recreational Fisheries:

- Confirm **Green Zone** projection via Eagle Sonar.
- Anticipated openings early in the season.
- Projected Total Allowable Catch anticipated to exceed current utilization.

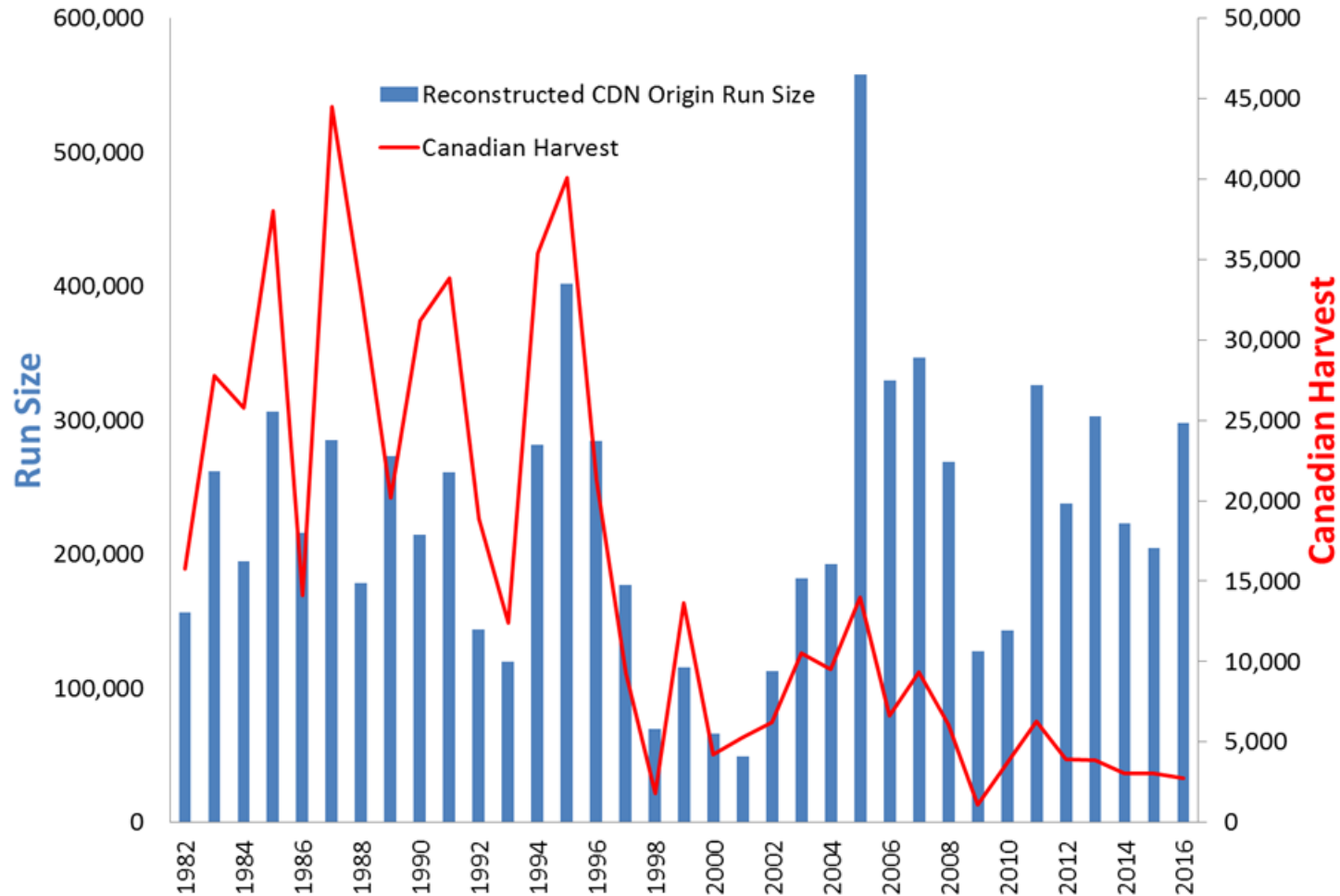


Yukon River Mainstem Chum Salmon 2016 Canadian Management Outcome

Canadian-Origin Run Size	298,000
IMEG (escapement objective)	70,000 – 104,000
CDN Allowable Catch Allocation	91,400 – 112,500
Canadian Harvest	2,745
Estimated Spawning Escapement	145,267

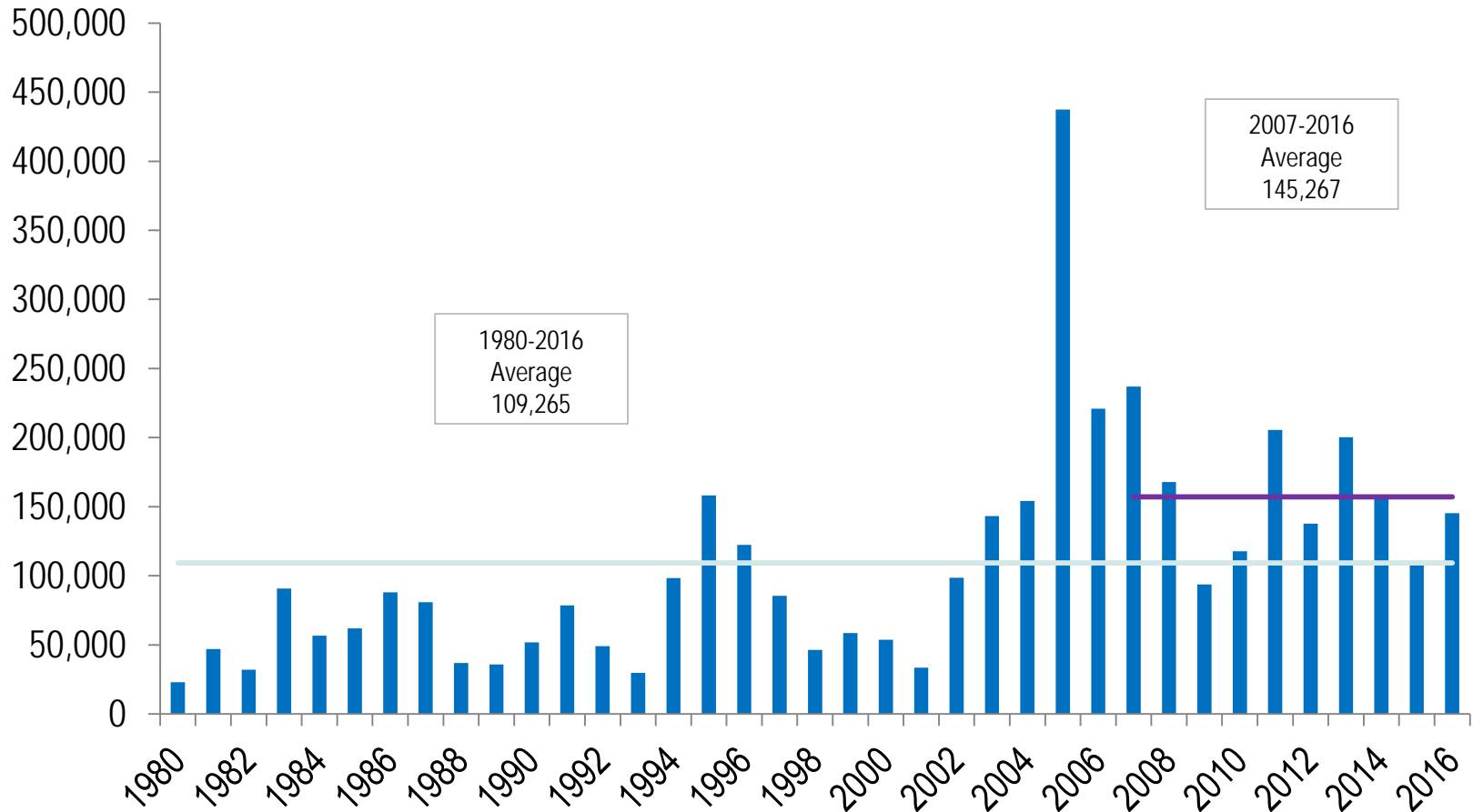


Yukon River Mainstem Canadian-Origin Chum Run Size and Canadian Harvest 1982-2016





Yukon River Mainstem Canadian-Origin Chum Estimated Spawning Escapement 1982-2016





Potential 2017 Pre-Season Allowable Catch Ranges Canadian-Origin (Mainstem) Chum Salmon

	Lower	Upper
Pre-Season Run Size Outlook	350,000	425,000
Spawning Escapement Goal (IMEG)	70,000	104,000
Total Allowable Catch (US and Canada)	246,000	355,000
Canadian Allowable Catch*	101,400	155,900
US Allowable Catch*	144,600	199,100

*The YRSA states that when the Total Allowable Catch (TAC) is between zero and 120,000 chum salmon, the guideline harvest range for Canada shall be between 29% and 35% of TAC; when the TAC is above 120,000 chum salmon, the guideline harvest range shall be between 29% and 35% of 120,000 plus 50% of the portion of the TAC greater than 120,000 chum salmon.



Mainstem Yukon River Chum Salmon Decision Matrix (Canada)

Border Passage Projections	Fishery			
	First Nation	Recreation	Commercial	Domestic
< 40,000	Closed Removal of allocation for conservation purposes	Closed No retention permitted	Closed	Closed
40,000 to 73,000	Varies¹ Catch target to vary with abundance within zone	Closed No retention permitted	Closed	Closed
> 73,000	Open Unrestricted	Open¹ Retention permitted No catch anticipated	Open¹ Allocation varies with run size	Open¹ Allocation varies with run size



¹ Allocations (harvest opportunities) are subject to run abundance and international harvest sharing provisions.



Yukon River Mainstem Chum Salmon 2017 Draft Canadian Management Strategy

Above average projection (350,000 to 425,000)

First Nation Subsistence Fisheries:

- Unrestricted

Commercial/Domestic/Recreational:

- Confirm **Green Zone** projection via Eagle Sonar.
- Anticipated Commercial/Domestic/Recreational openings early in the season.
- Projected Total Allowable Catch is anticipated to exceed current utilization.





Questions?

