

# Porcupine River Fall Chum Salmon 2021 U.S. Management

**U.S./Canada Panel Meeting**

**April 13, 2021: Agenda Item 11b**

**Jeff Estensen**

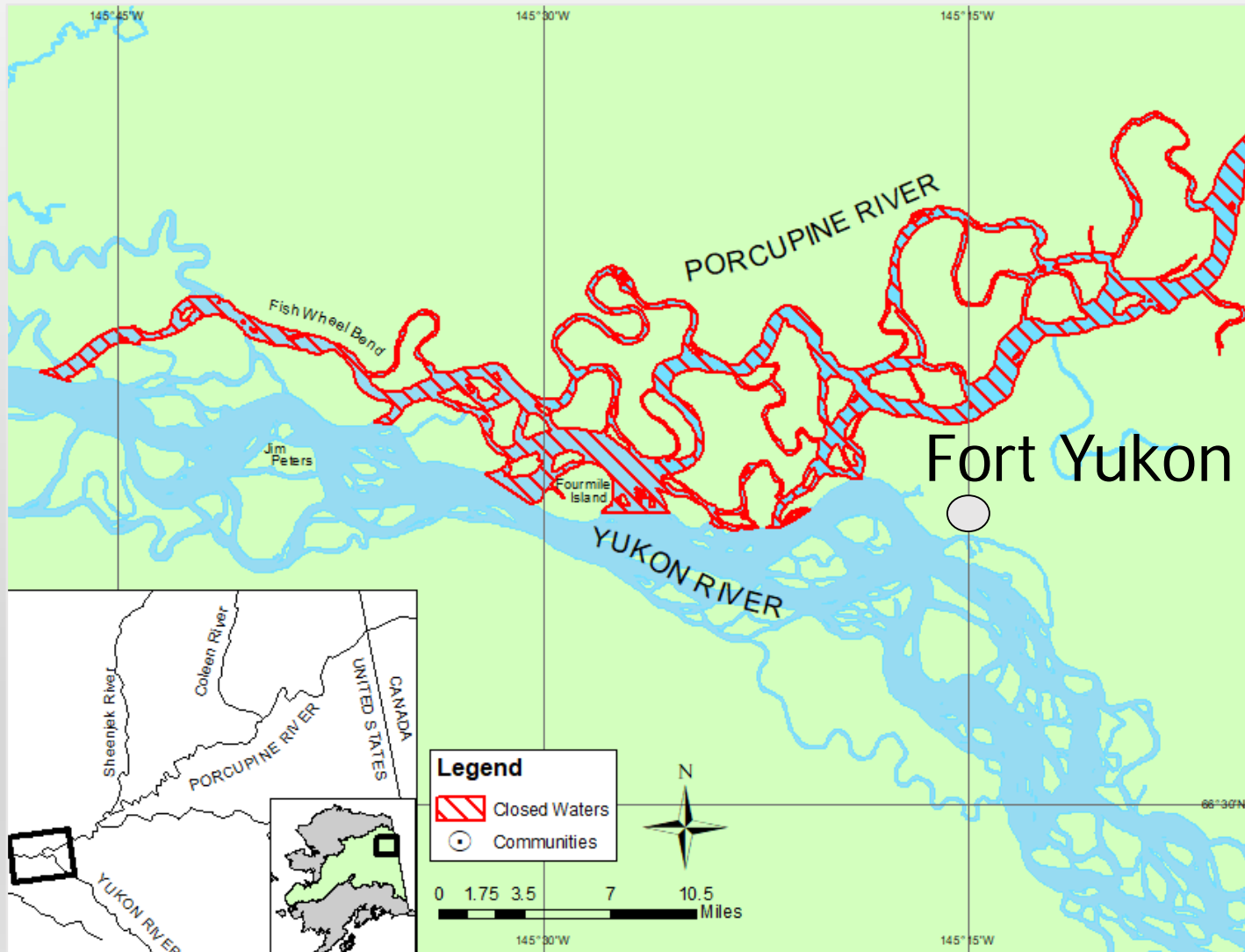


# 2021 U.S. Porcupine River Fall Chum Salmon Management

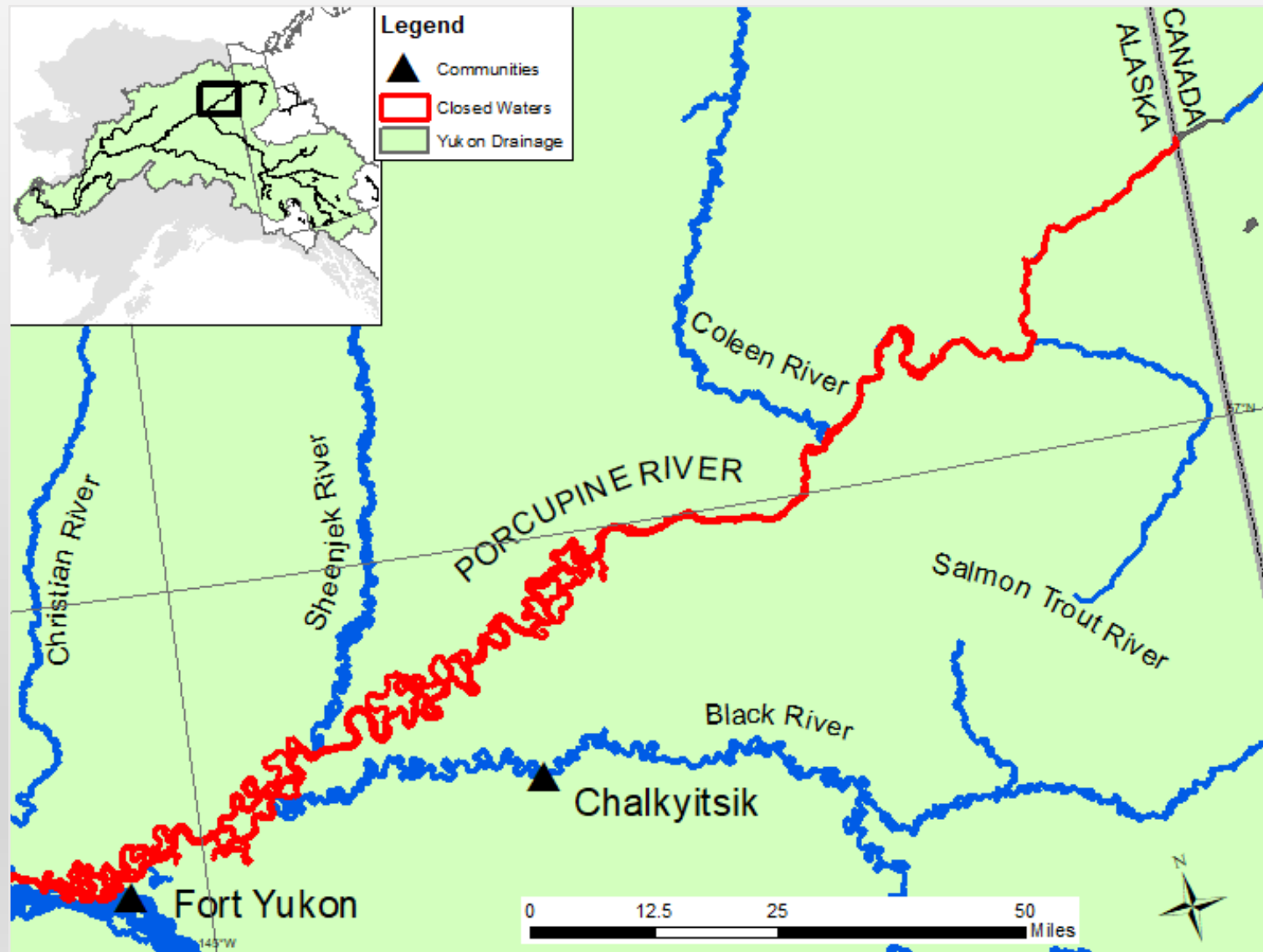
- Fishing Branch River fall chum salmon forecast is revised in early July when the drainagewide forecast is revised.
- Subsistence fishing management will be based on revised forecast and inseason run assessment.
  - Restricted subsistence salmon fishing schedule.
  - Full closure of subsistence salmon fishing in the mainstem Porcupine River.
    - Tributaries will remain open
- There is flexibility to adjust management inseason as information becomes available:
  - Lower Yukon River assessment.
  - Porcupine River sonar.
  - Fishing Branch River weir.

# Porcupine River Restrictions

Porcupine River has 3 mouths



# Porcupine River Restrictions





# Questions?

ADF&G Fall Season Staff  
[jeff.estensen@alaska.gov](mailto:jeff.estensen@alaska.gov)  
[bonnie.borba@alaska.gov](mailto:bonnie.borba@alaska.gov)  
[christy.gleason@alaska.gov](mailto:christy.gleason@alaska.gov)  
[andy.padilla@alaska.gov](mailto:andy.padilla@alaska.gov)

Photo by Jeff Estensen