

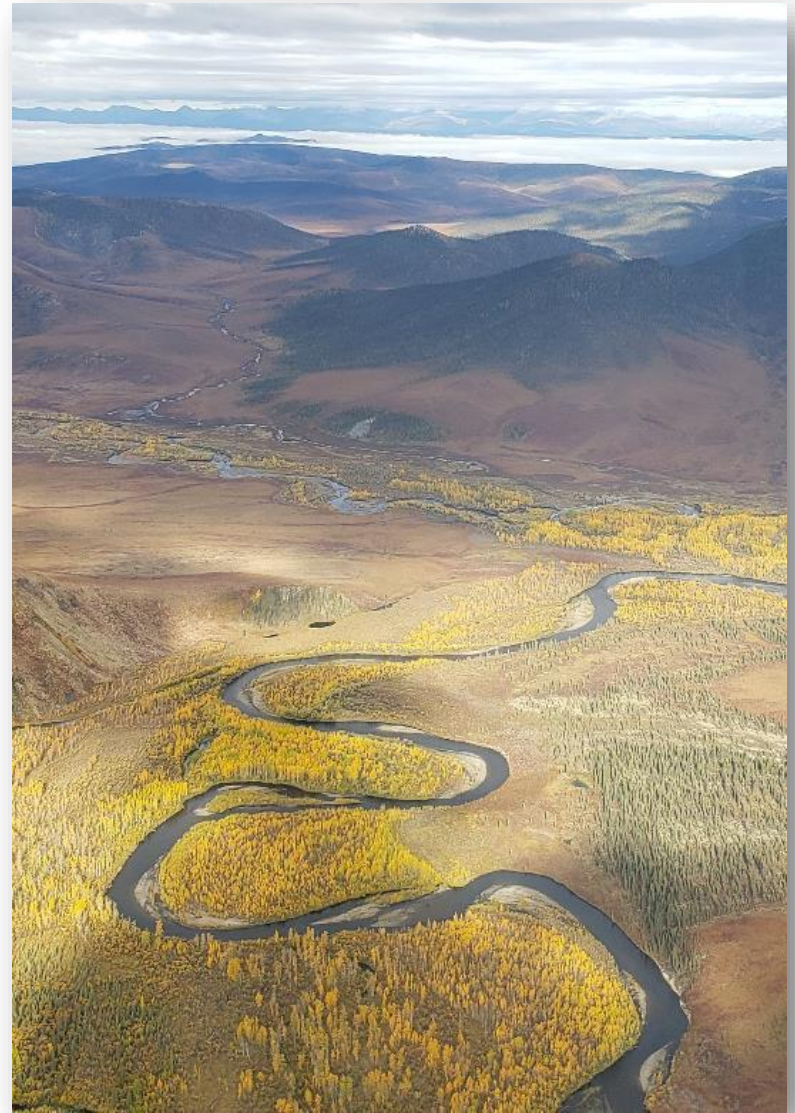


2023 Porcupine River (Fishing Branch) Chum Salmon Post-Season Review: Canadian Reporting

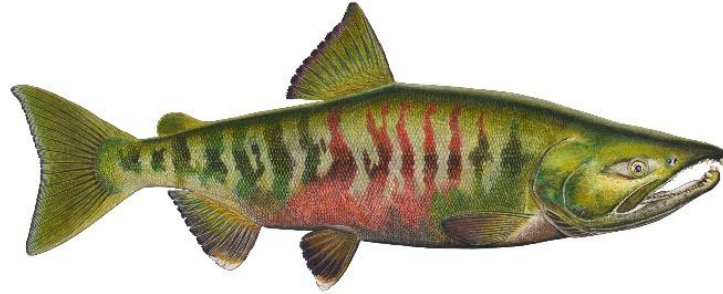
Presented to:
Yukon River Panel

Prepared by:
Yukon River Operations
Yukon and Transboundary River Area
Fisheries and Oceans Canada

January 25, 2024



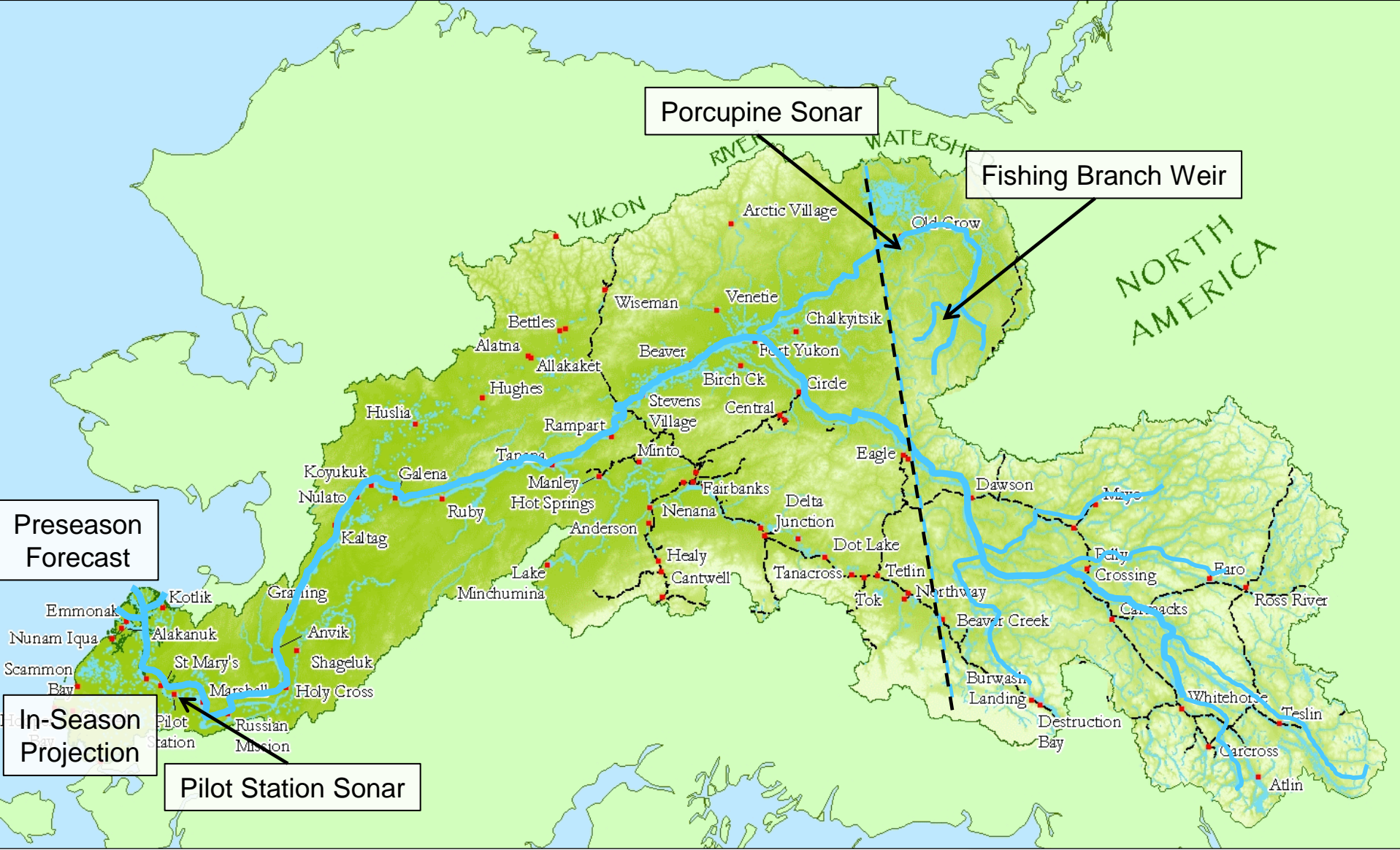
2023 Canadian-Origin Chum Salmon Porcupine River (Fishing Branch)



Presentation Overview

1. Time Series of Assessment and Associated Management
 - Pre-season
 - In-season
 - Post-season
2. Post-season Assessment Summary
3. Review of Environmental Conditions

Porcupine River Chum Salmon Assessment Sites



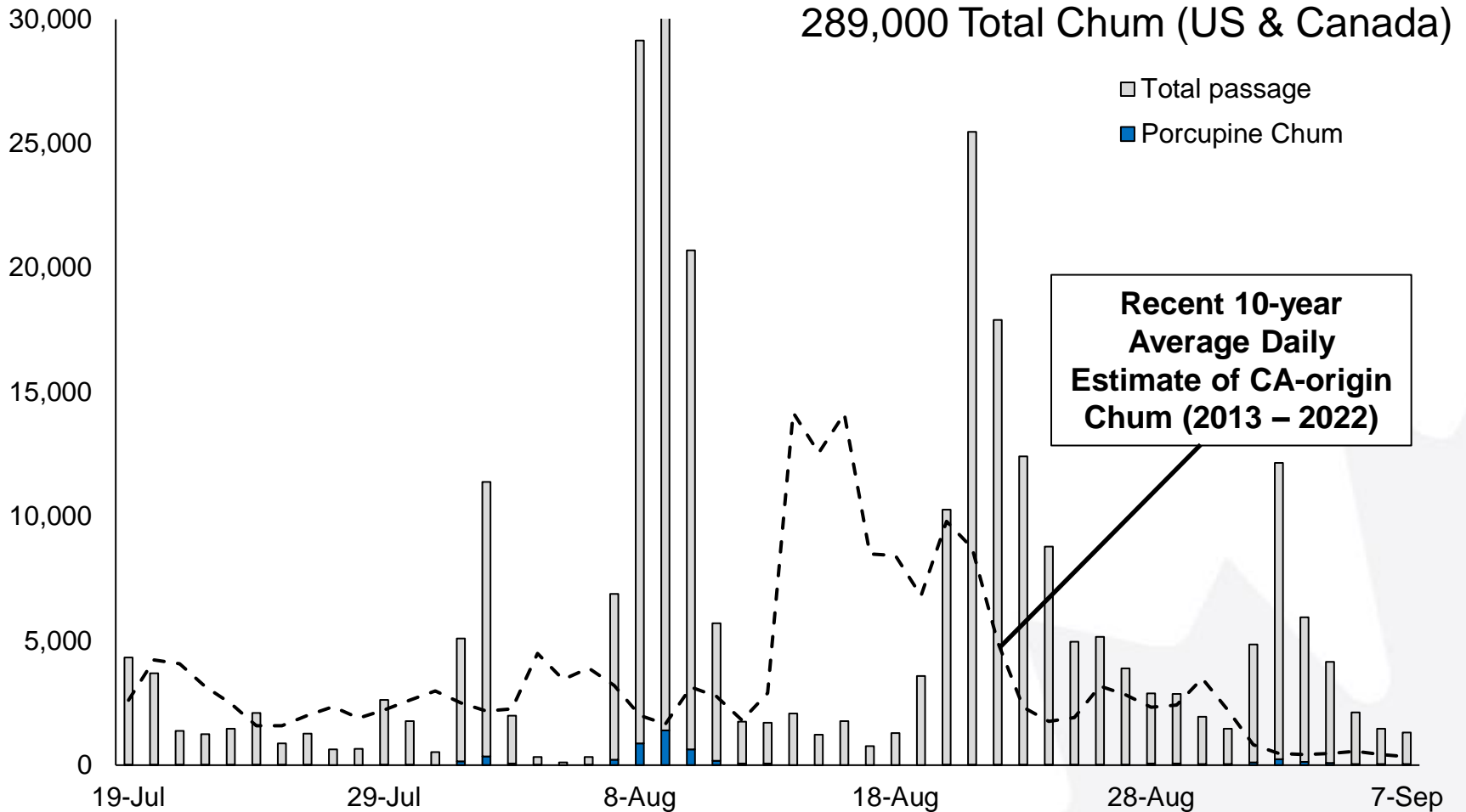
2023 Chum Salmon Fishery Management Summary - Fishing Branch River

2023 Pre-Season Forecast				
Fishing Branch Outlook	IMEG	Total Allowable Harvest	CDN Harvest Guideline*	Anticipated Fishery Opportunities
10,000	22,000 – 49,000	N/A Harvest Shares not identified in <i>Yukon River Salmon Agreement</i>	0	First Nation Fisheries – Based on pre-season forecast limited or no First Nation harvest anticipated Public Angling Fishery – Closed Commercial Fishery – N/A Domestic Fishery – N/A

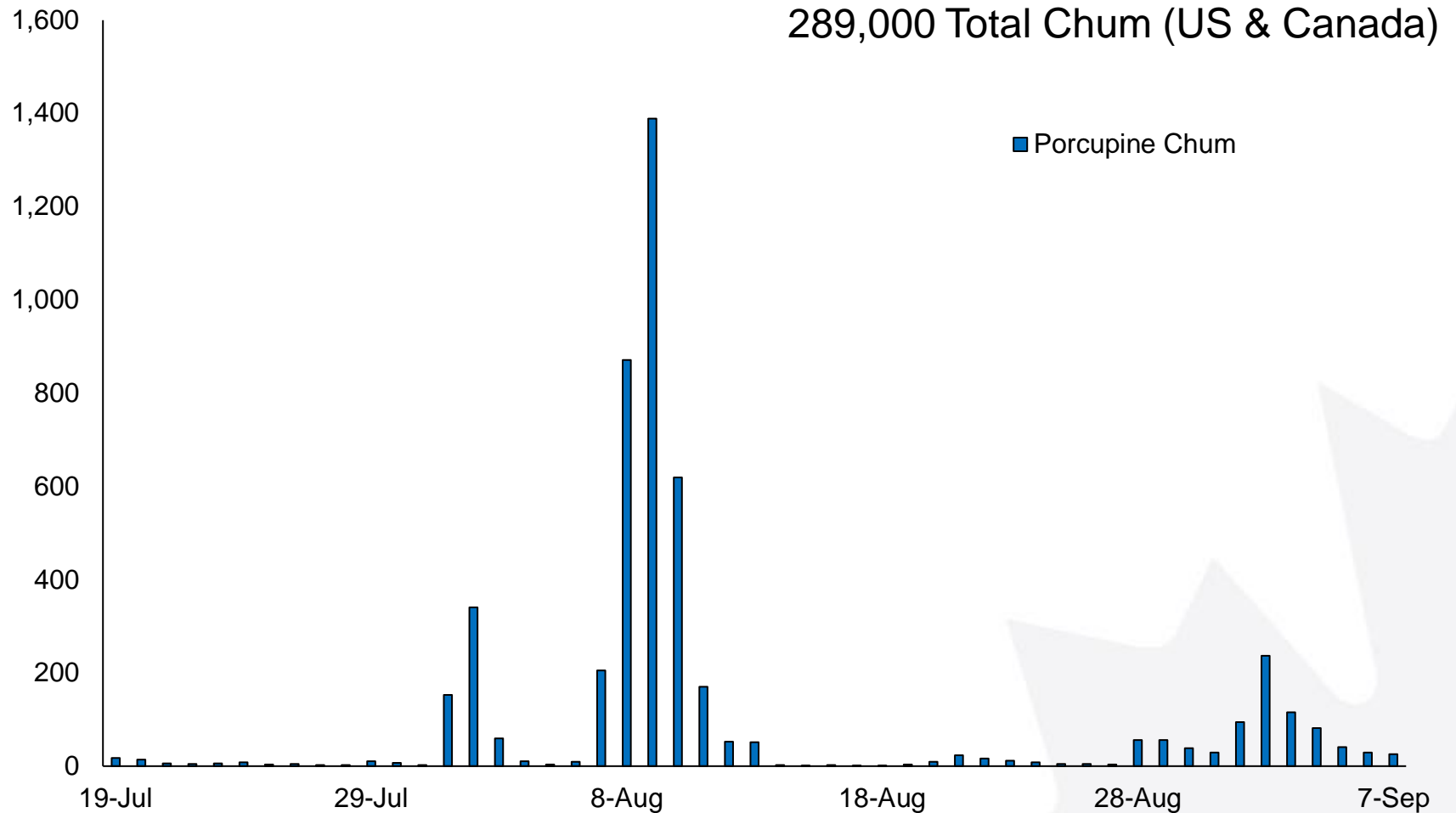
*The Canadian harvest guideline assumes minimum spawning target of 22,000 and uses a 32% Canadian harvest share guideline.

2023 In-Season Estimate			
Fishing Branch Forecast	Total Allowable Harvest	CDN Harvest Guideline*	Revised Fishery Opportunities
17,000	N/A Also: 0	0	First Nation Fisheries – No First Nation harvest anticipated

Pilot Station 2023 Daily Chum Passage Estimates

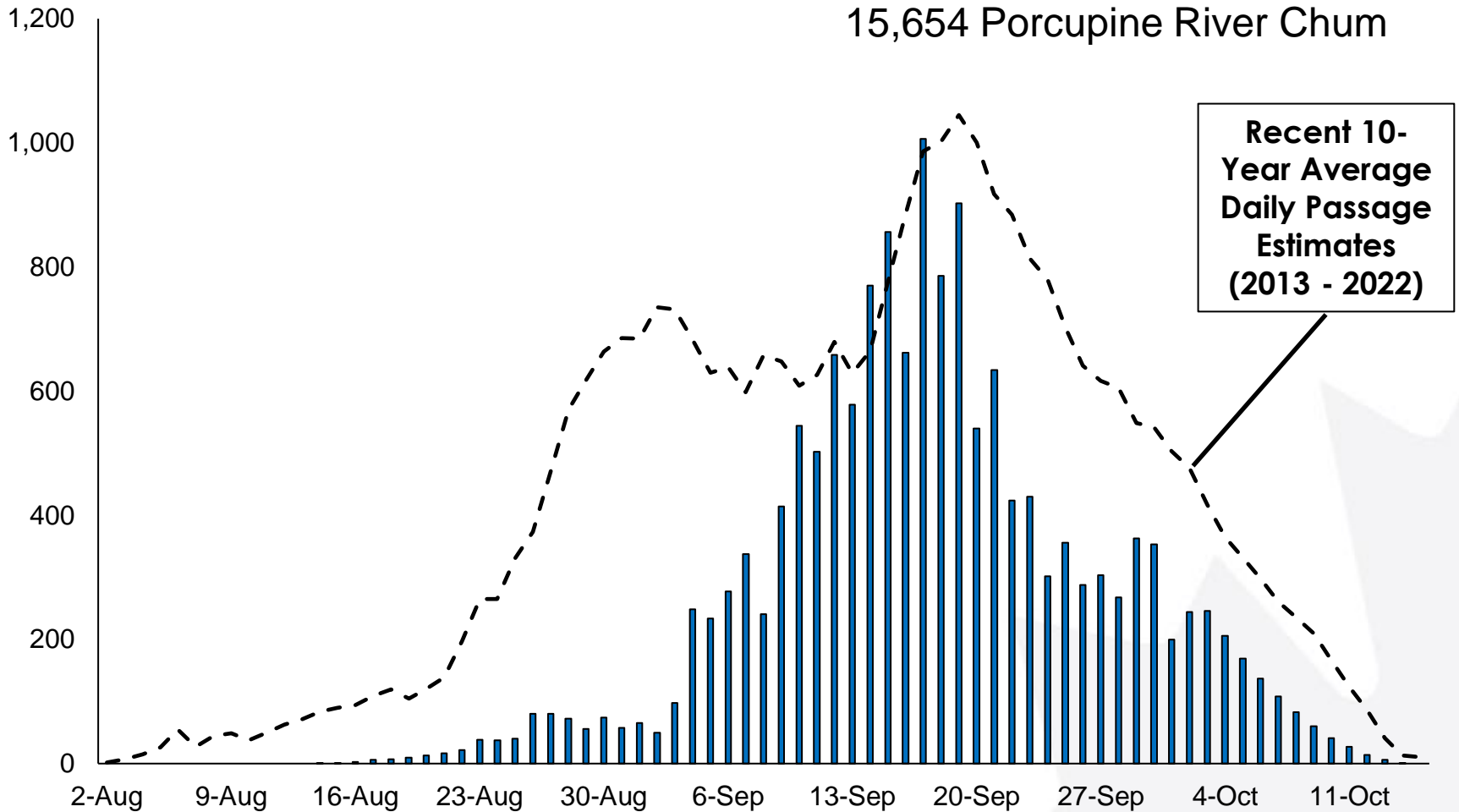


Pilot Station 2023 Daily Chum Passage Estimates



Porcupine River Sonar Daily Passage Estimates

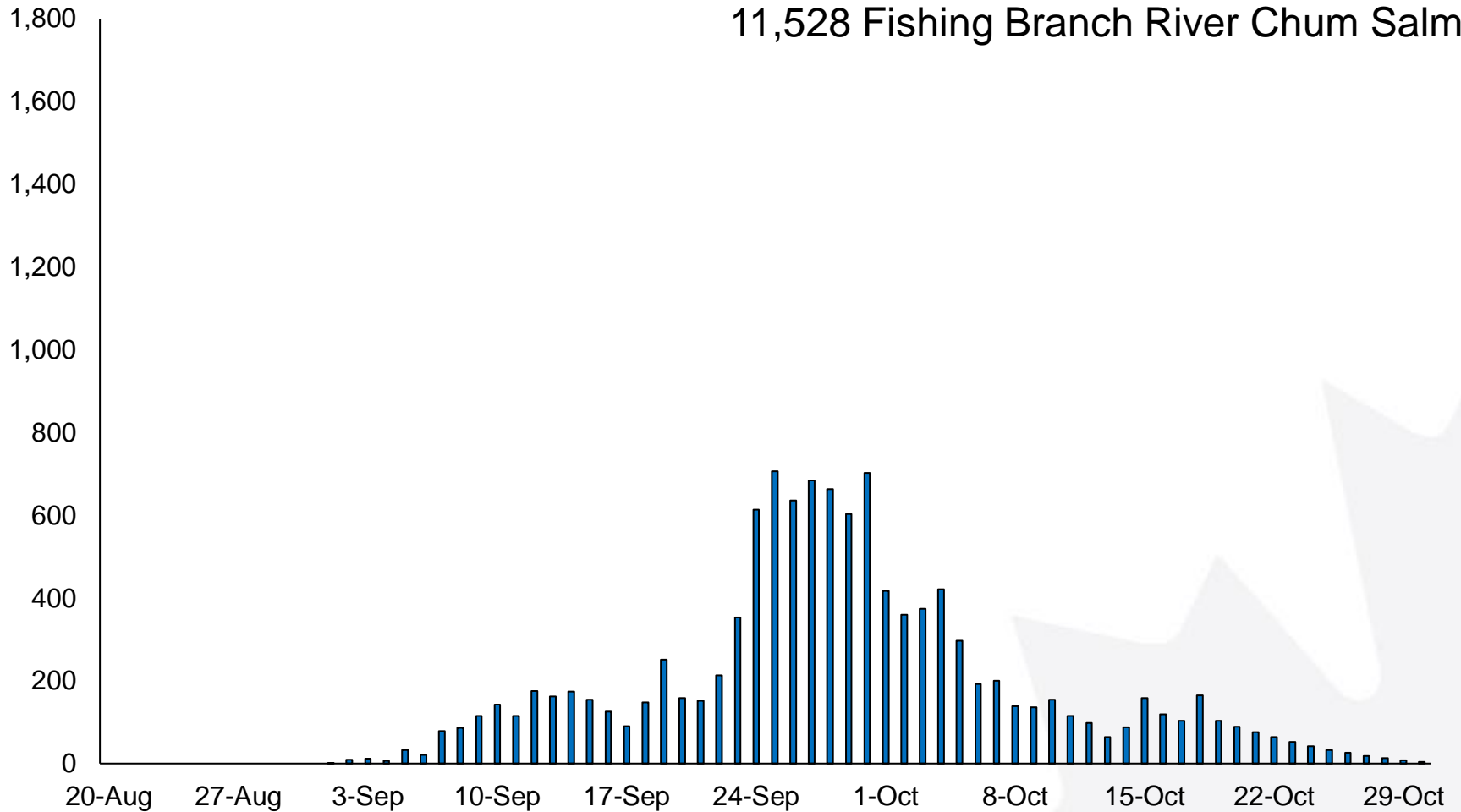
15,654 Porcupine River Chum



**preliminary*

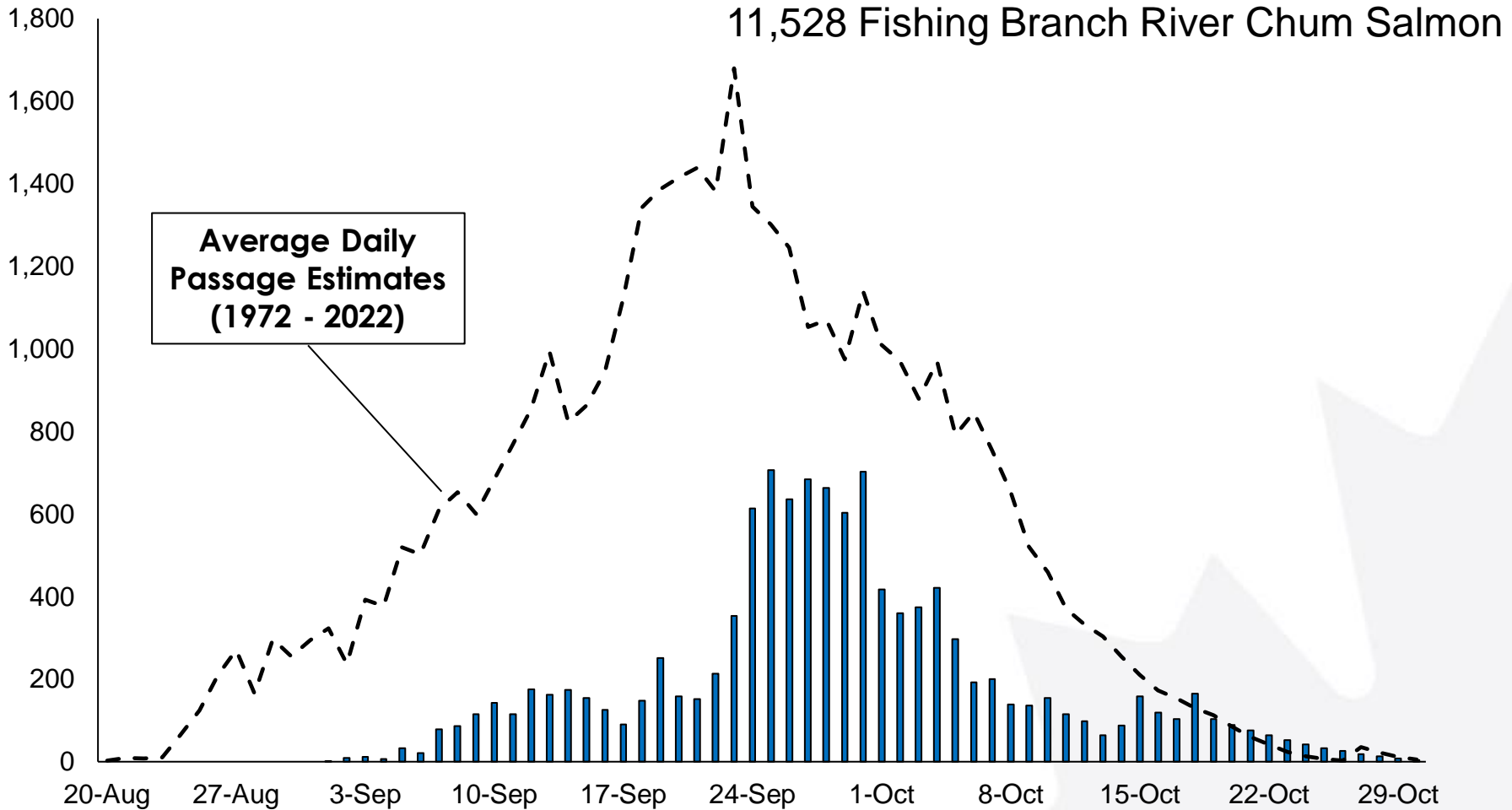
Fishing Branch River Daily Passage Estimates

11,528 Fishing Branch River Chum Salmon



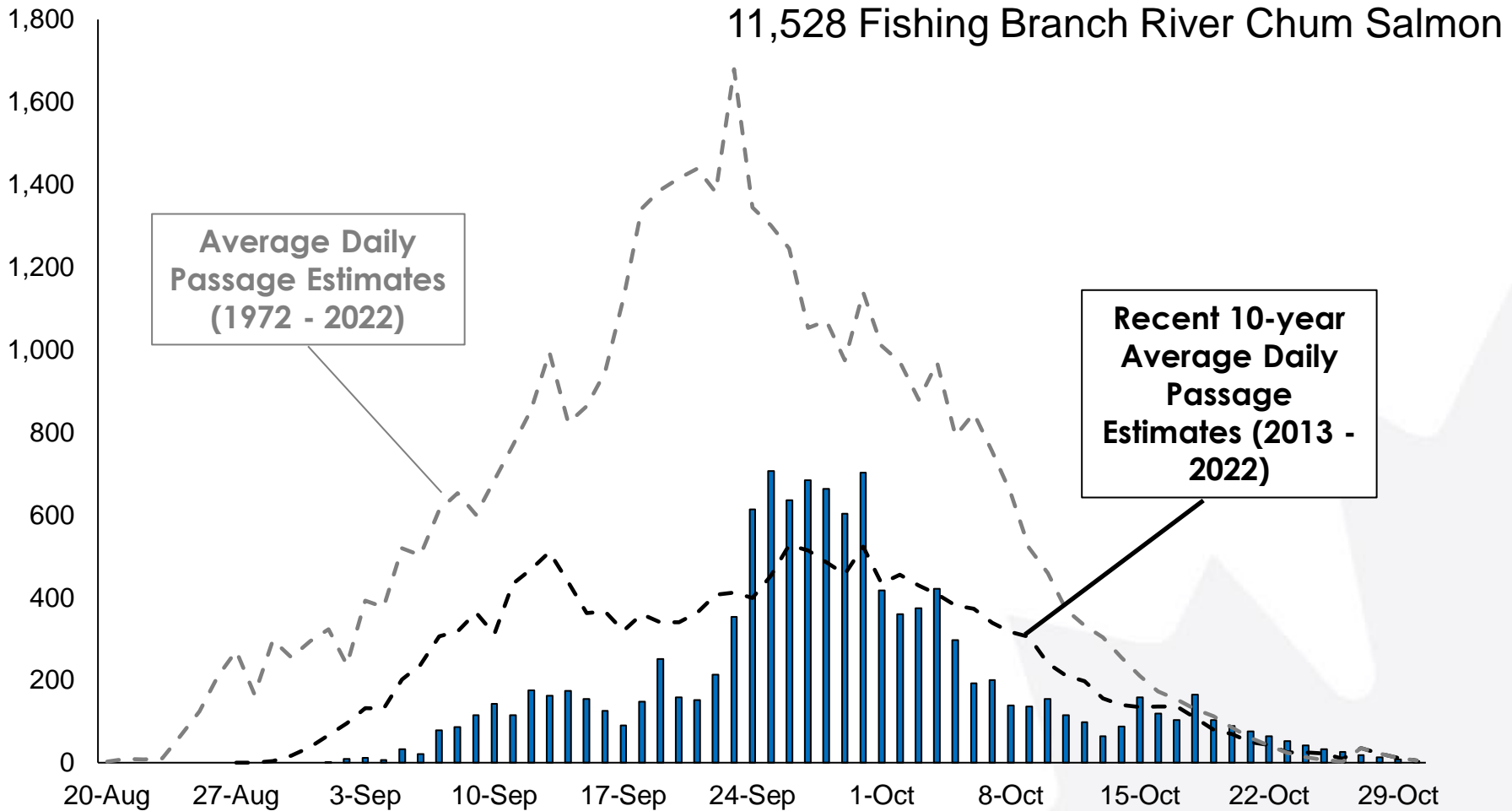
**preliminary*

Fishing Branch River Daily Passage Estimates



**preliminary*

Fishing Branch River Daily Passage Estimates



**preliminary*

2023 Chum Salmon Fishery Management Summary - Fishing Branch River

Federal (Fisheries and Oceans Canada) Chum Salmon Management Actions:

- Chum retention and possession prohibited in the public angling fishery combined with closures to salmon angling.
- In-season assessment and management updates provided to Vuntut Gwitchin First Nation Government and Renewable Resources Council representatives; DFO hosted in-season assessment and management conference calls bi-weekly.
- Weekly written summaries distributed from June 23 to November 3.

Yukon First Nation Government (Vuntut Gwitchin Government) Fishery Management Actions:

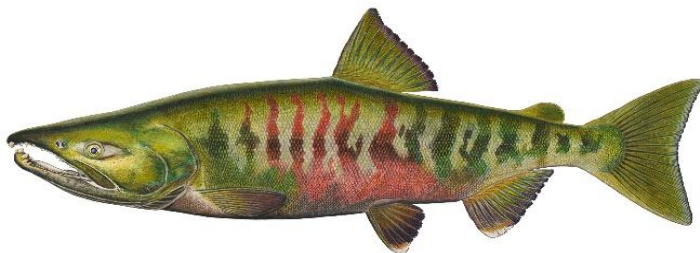
- Partnered with DFO to deliver Porcupine and Fishing Branch Assessment projects.
- Considered in-season information and updates and directed fishers to not harvest chum salmon.

Fishing Branch River Chum: 2023 Post-Season Report Card

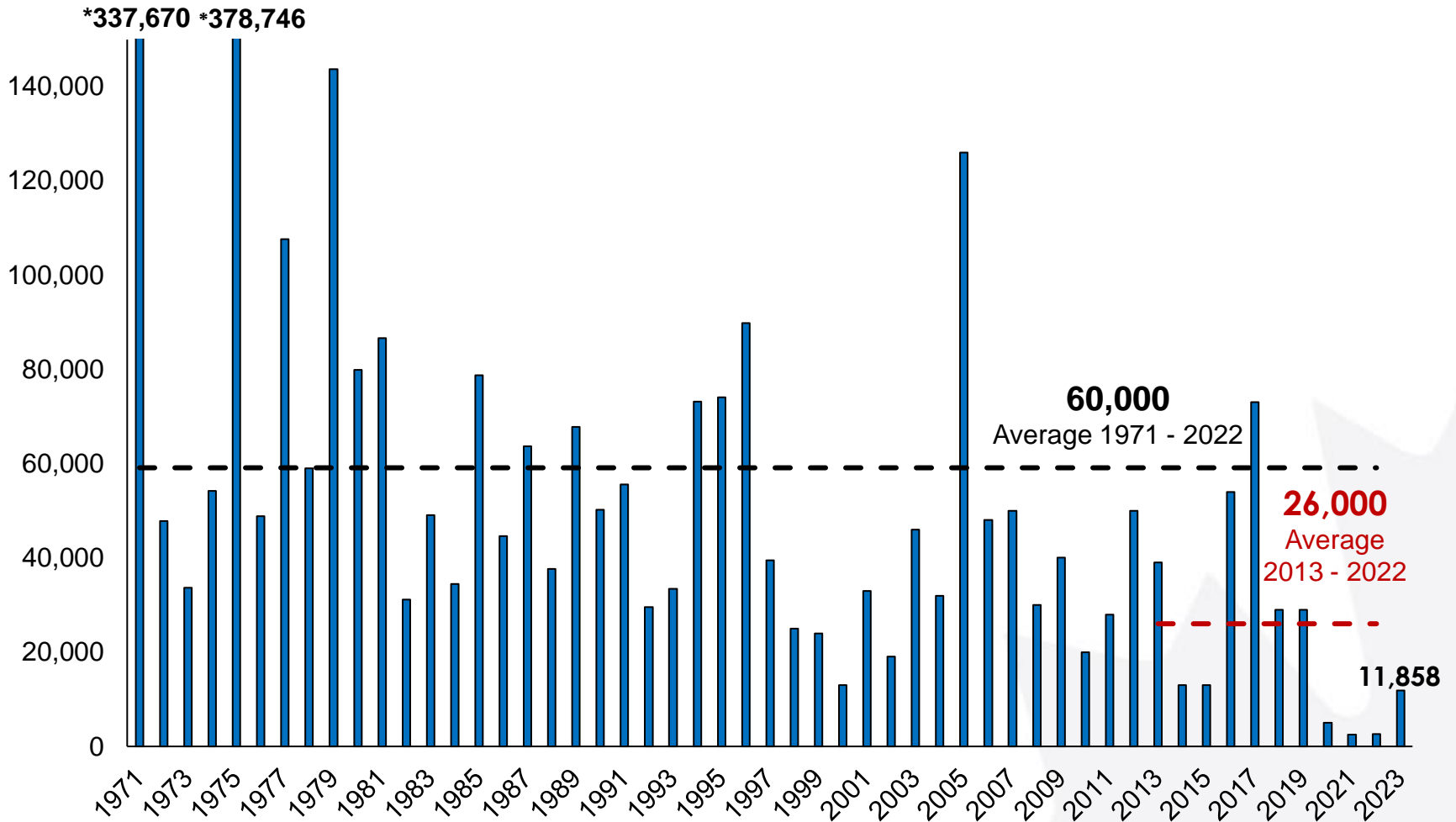
Total Fishing Branch Run Size	U.S. Harvest Share	U.S. Harvest	Canadian Harvest Share	Canadian Harvest	Spawning Escapement Estimate
11,858	N/A	280	N/A	<50*	11,528*

Harvest and Escapement outcomes

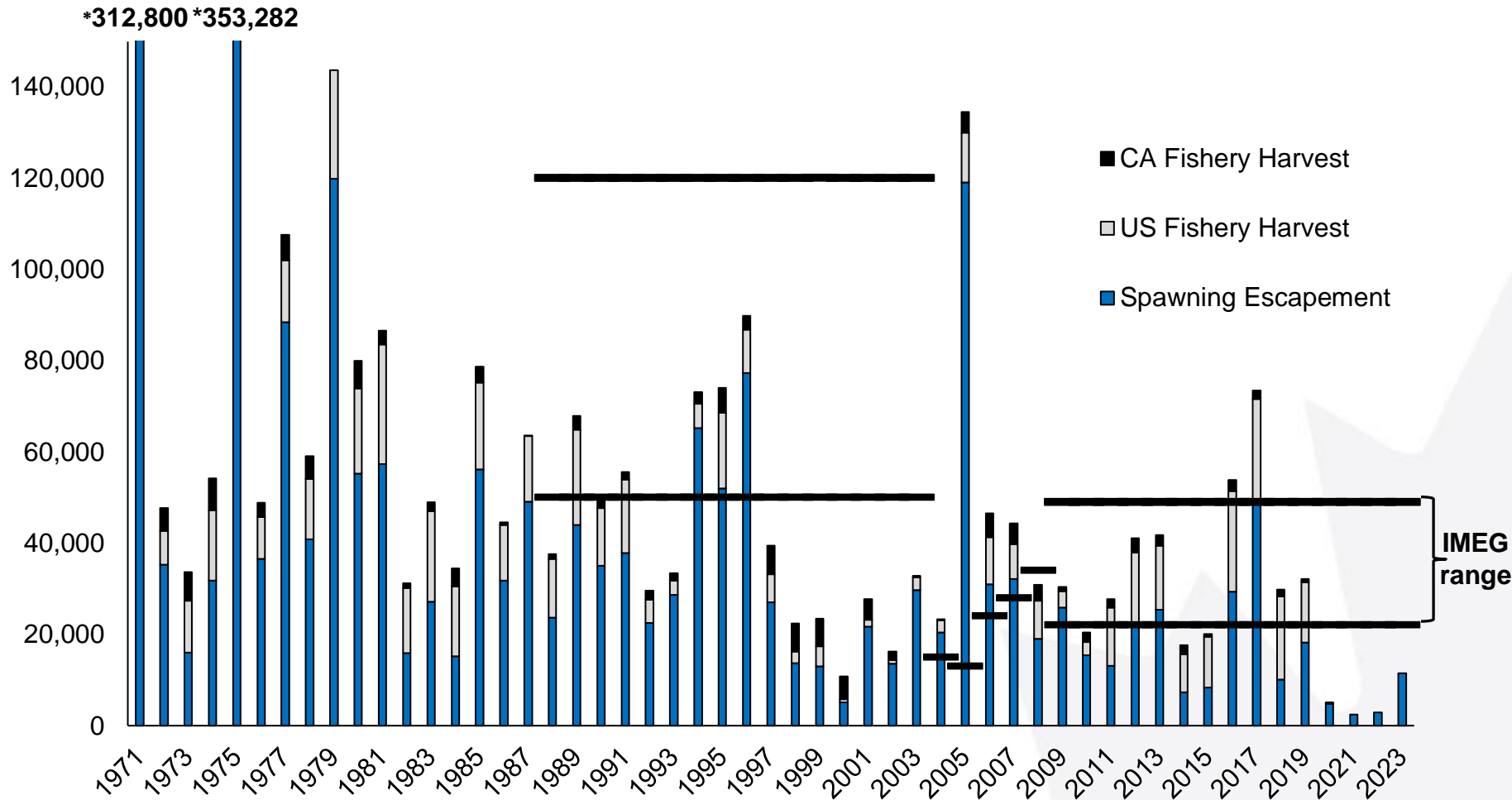
- Total Canadian-origin run size insufficient to meet IMEG (22,000 – 49,000)
- Spawning escapement did not meet IMEG



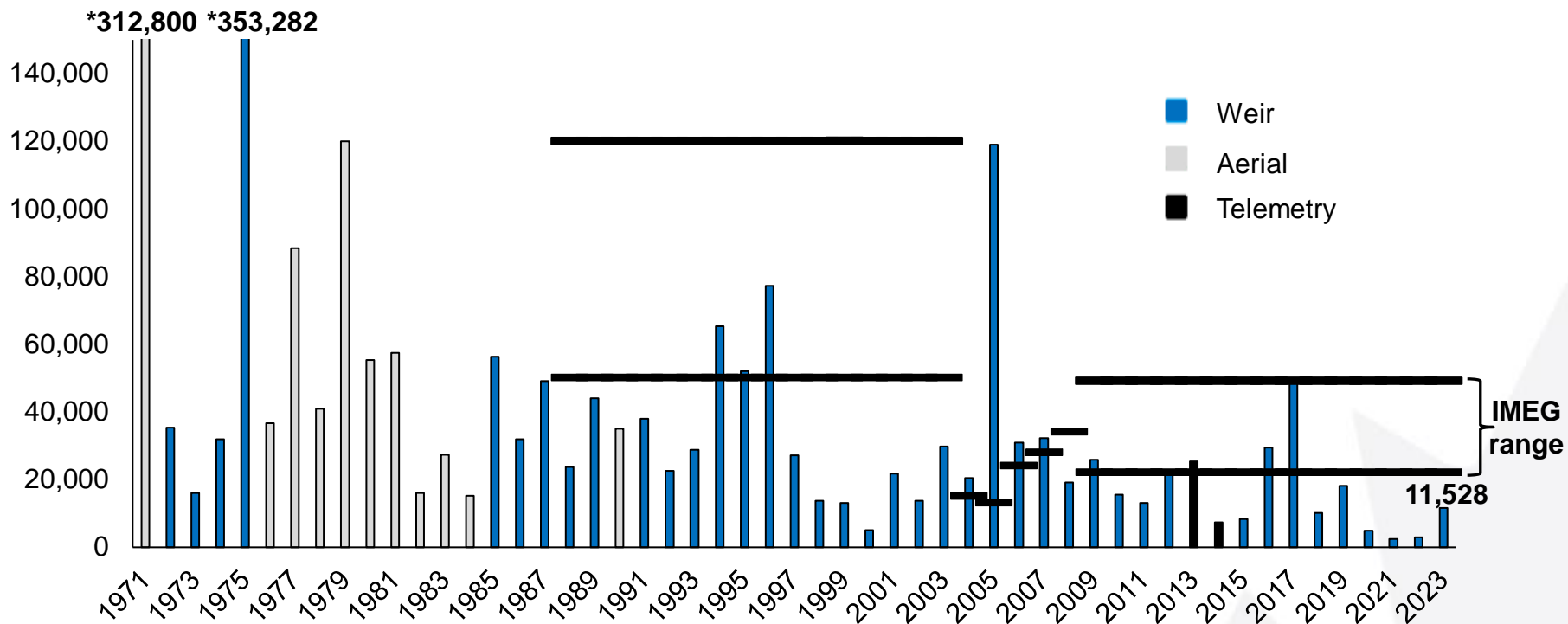
Estimated Total Run Size Fishing Branch River



Estimated Spawning Escapement and Harvest Fishing Branch Chum

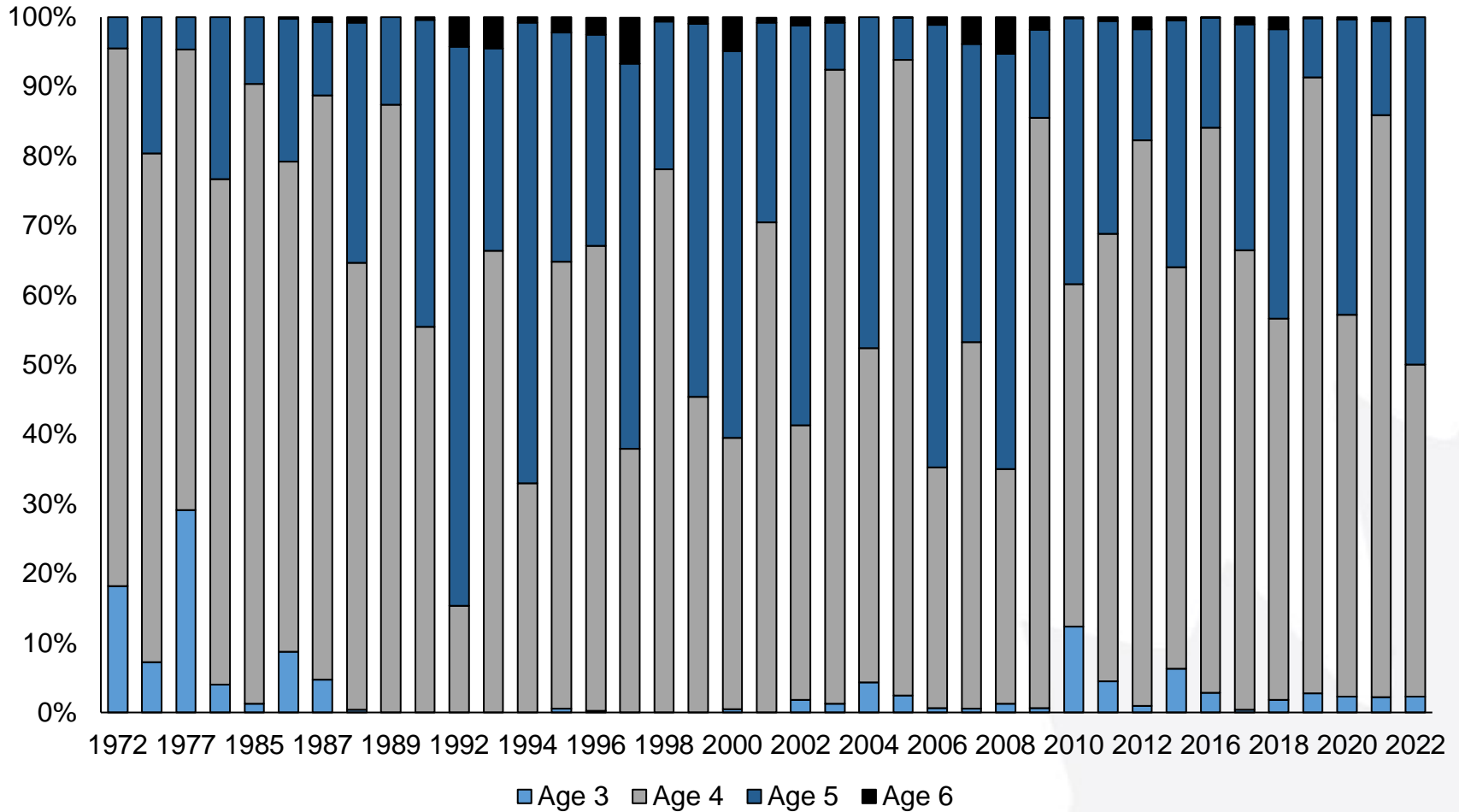


Estimated Spawning Escapement Fishing Branch Chum

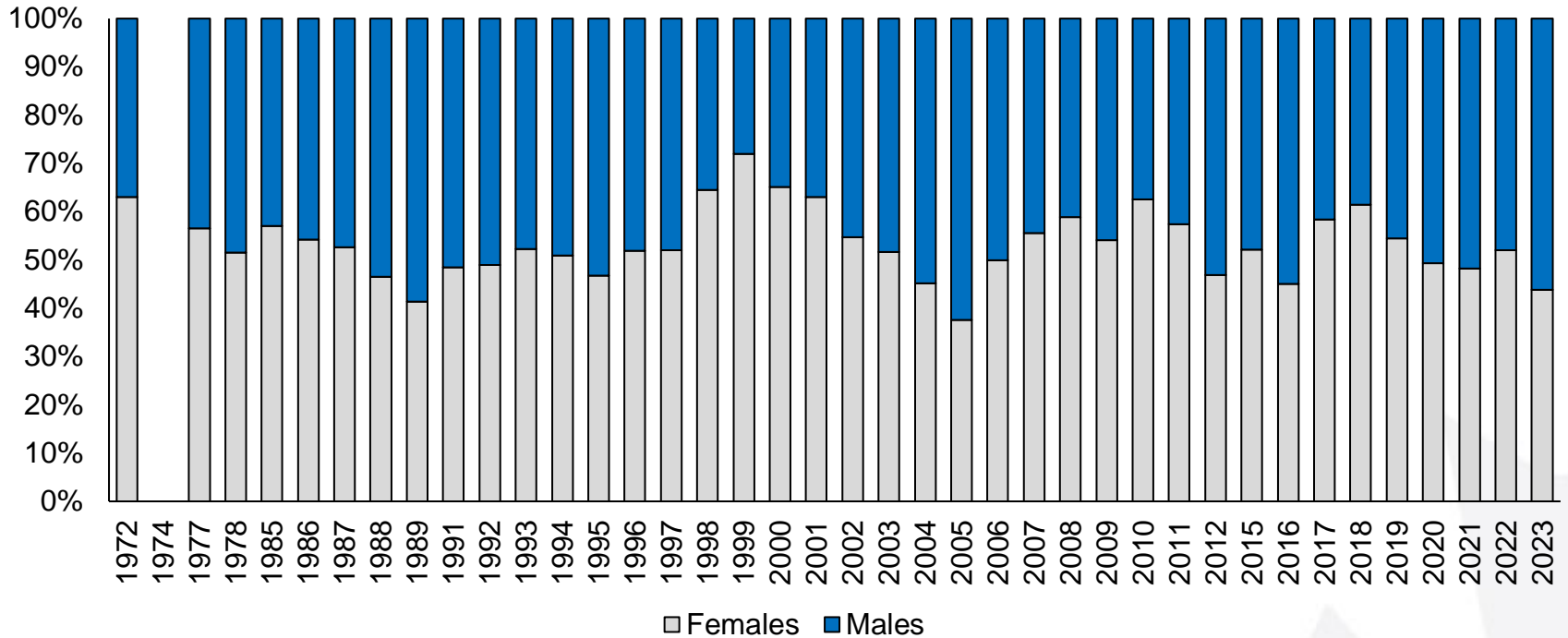


- Higher escapement compared to recent years
- Well below the lower bound of the Interim Management Escapement Goal (IMEG) range

Chum Age Composition by Year Fishing Branch River

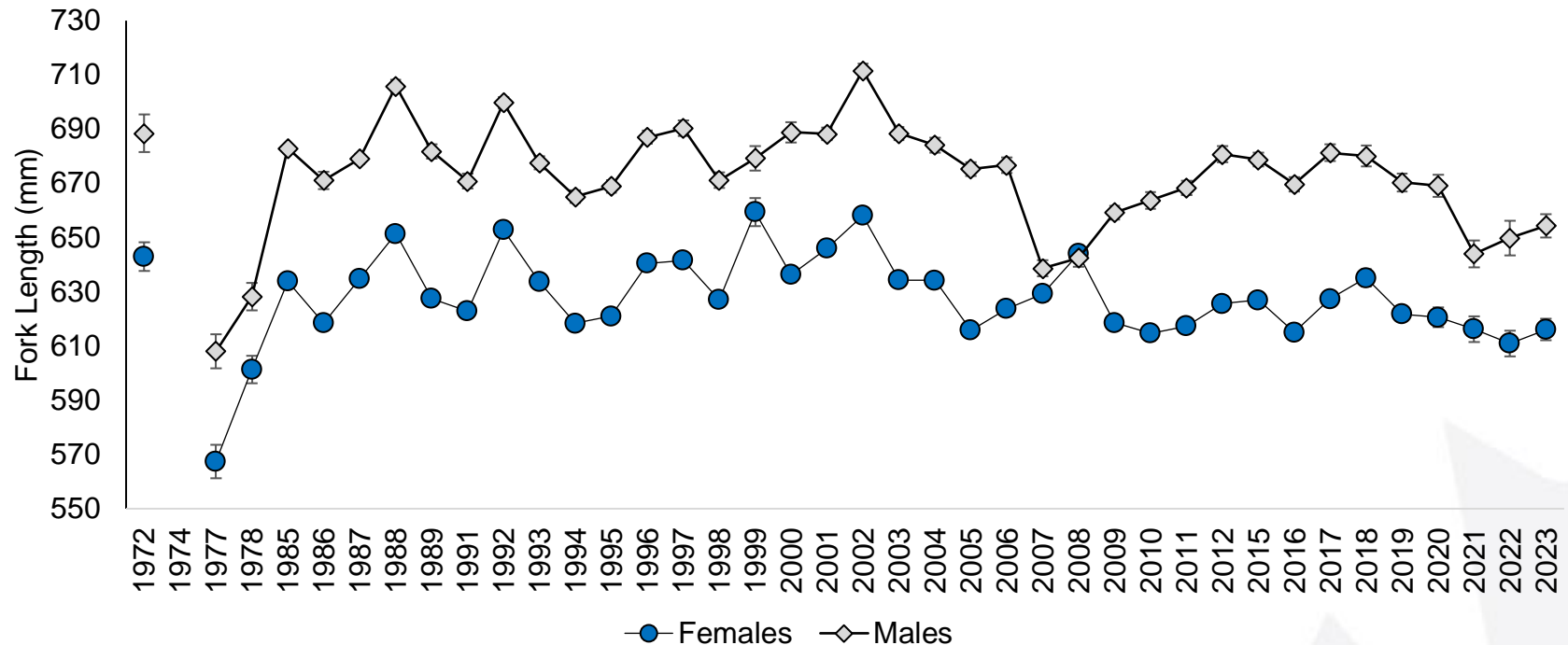


Chum Female/Male Composition by Year Fishing Branch River



- 44% female in 2023, below the average of 53%

Chum Female/Male Average Length by Year Fishing Branch River



- Average length of females was 616 mm, down from the average of 628 mm
- Average length of males was 654 mm, down from the average of 673 mm

2023 Canadian-Origin Coho Salmon Porcupine River

- Coho salmon are known to migrate to, and spawn within the Canadian portion of the Yukon River watershed, most notably in the Porcupine River
- Limited information on coho population due to late run timing, typically occurring under ice
- No current assessment projects for Canadian-origin Coho Salmon
- Limited fishing opportunities vary dependant on environmental and ice conditions as well as run timing
- For 2023, the ADF&G reported the 2nd lowest abundance on average (1995-2023) Yukon River Drainage wide estimate (65,000 vs 222,000)



Environmental Conditions 2023



Porcupine River

- Water levels were low for the initial part of migration, but rose to high/average levels in late August and early September.
- Water temperatures above average throughout migration period.

Fishing Branch River

- Water levels started off high and dropped steadily through chum migration period and early spawning, falling well below average by late October.
- Water temperatures above seasonal average.

